

SDL Application Instructions

SIMULATED DIVIDED LITES

These instructions are for the application of simulated divided lite (SDL) strips. They should be followed precisely to ensure proper placement and adhesion.

1 INITIAL BAR FIT CHECK

Verify that each grille bar lays flat on and makes contact with the EXTERIOR side of the glass while maintaining an even gap on both sides between the door facing and the tip of the bar. (DO NOT remove the red plastic liner at this time). Bars that are too long and prevent full contact with the glass must be sanded or trimmed to length for a trouble-free, long term adhesion to the glass.

2 MARKING THE DAYLIGHT OPENING ON DOOR FACING FOR FINAL BAR POSITION

Once the correct bar gap is verified, take a horizontal bar and slide it to the bottom edge of the daylight opening on the door facing. Center the bar and with a pencil, mark the position of where the side of the intersecting vertical bar would contact the door facing (v-notch of joint). Mark this position for all vertical bar locations (bottom and top of daylight opening on door facing). Repeat this process with a vertical bar on the left and right sides of the daylight opening on door facing - marking the locations of where the side of the horizontal intersecting bars would contact the door facing. During the final application to the glass these marked reference locations will be used to set the grille squarely into the daylight opening on the door facing for a perfect exterior to interior alignment.

3 ASSEMBLE AND MASKING TAPE THE INTERSECTIONS

On a flat work surface assemble the grille with the **red liner down**. Apply a small piece of masking tape over each intersecting joint (on the non liner side) to hold the grille together. Check the fit of the grille to the EXTERIOR side of the glass. (**DO NOT** remove the red plastic liner at this time).

4 PRIME THE GLASS

Wipe the glass with the included Grille Adhesion Promoter (GAP) towelette (one towelette per side). A slight white haze may appear on the glass as the GAP product dries. This is normal.

REQUIRED MATERIALS

- SDL application kit (includes 2 GAP towelettes, installation instructions, finishing instructions)
- Pencil
- Clean lint-free cloth
- 3" rubber J-roller (suggest ROCKLER Laminate Roller Part # 39463)
- Flat work surface
- Masking tape
- Zip ties

OPTIMAL CONDITIONS

Weather

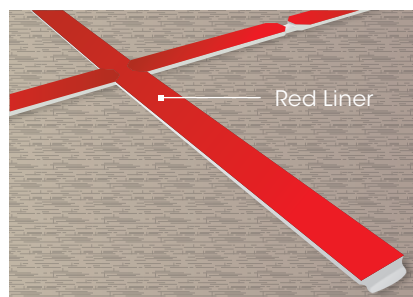
- Do not apply grille to glass if below 60°F
- Low humidity

CARE & HANDLING

- You may clean the glass with a commercial glass cleaner (**DO NOT USE WINDEX**).
- **However, glass must be primed with the included Grille Adhesion Promoter (GAP) towelette prior to application.** Ensure that the glass is dry before priming it.
- It is recommended that the installation be completed in a controlled environment.

CAUTION

ONCE THE TAPE CONTACTS GLASS, THE GRILLE CANNOT BE REPOSITIONED OR REMOVED. EXERCISE CARE WHEN HANDLING GRILLE PIECES TO AVOID CRACKING OR BREAKING.



5 REMOVE RED TAPE LINER

Flip the assembled grille so the red liner is up and peel all the liners off the grille bars exposing the black adhesive tape.

6 APPLY ZIP TIES

Lightly place the tips of the zip ties roughly 1/8" from the side edge onto the adhesive tape backing. Place a zip tie approximately 3-4" from the end of each bar and a few ties near each intersection to keep the grille suspended above the glass during the next step. It is suggested a zip tie be placed every 12-16" at a minimum.

7 POSITION GRILLE AT MARKS ON DOOR FACING

With the zip ties in place, position the grille near the pencil marks on the door facing as in Step 2. Once in position, press down all bar ENDS first – aligning to the pencil marks and correct gaps. At this time pull the END zip ties away.

8 REMOVE ZIP TIES FROM INTERSECTIONS

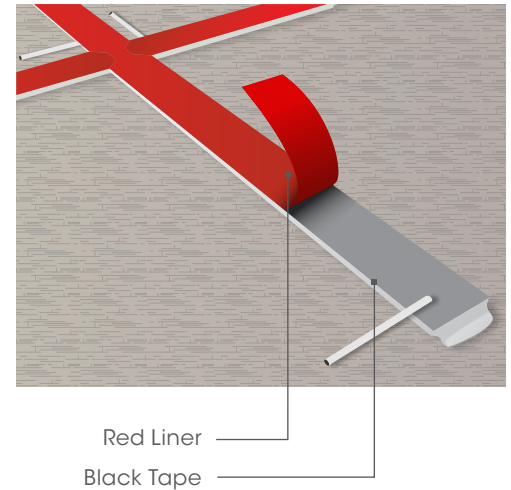
Apply slight pressure to the intersections and remove the remaining zip ties. The grille is now committed to the glass in this position.

9 APPLY PRESSURE TO THE GRILLE

Using a J-Roller, FIRMLY roll down each bar for complete adhesion. This is a critical step. The masking tape can now be removed.

10 ALIGNMENT

Examine the grille through the interior side to confirm adhesion of the bars to the glass, particularly all joints and around the perimeter of the daylight opening on door facing.



11 INTERIOR APPLICATION

Repeat these steps for the interior side of the glass. Check the alignment with the exterior side before attaching the grille to the interior side glass.

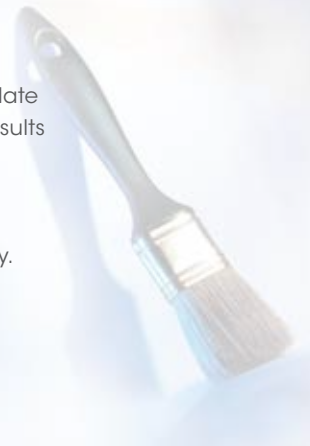
12 ADHESION TIME

Allow 8 hours before exposing grille to temperatures below 60° F.

SDL Finishing Instructions

SIMULATED DIVIDED LITES

- 1 Lightly sand the surface of the SDL bars
- 2 Dust, debris and other surface contaminants can accumulate on the surface of the SDL bar. Therefore, to achieve best results and maximum coating adhesion, wipe/clean the surface thoroughly (including edges, corners, step, etc.) with the lint free cloth dipped in water to remove sanding dust and residual contaminants. Allow the SDL bars to dry thoroughly.
- 3 Use the high quality exterior paint to finish the SDL bars. Follow manufacturer's recommendations for the application and curing/drying details.



REQUIRED MATERIALS

- Sandpaper
- Clean lint-free cloth
- High quality exterior paint